

DeviceNet™, Receptacles

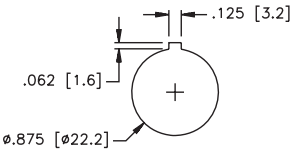
- Receptacles Provide Transition from Male to Female Connectors
- Available for Bulkhead and Feed Through Applications



Housing	Part Number	Specs	Application	Pinouts
	RSF RKF 57/22	Nickel Plated CuZn or Stainless Steel 300 V, 9 A -40° to +75°C IP 67	minifast® Bulkhead Receptacle <ul style="list-style-type: none">• Straight male/female feed through	Male Female
	FKM FS 57/M12	Nickel Plated CuZn or Stainless Steel 250 V, 4 A -40° to +75°C IP 67	eurofast® Bulkhead Receptacle <ul style="list-style-type: none">• Straight male/female feed through	Male Female

Standard housing material is nickel plated brass. "RSF RKF.."; "RSFV RKFV.." indicates stainless steel housing.

Panel Cutout
RSF RKF 57/22



Panel Cutout
FKM FS 57/M12

